

 **KIP 800 | COLOR SERIES**



KIP 800 | COLOR SERIES

A new generation of wide format functionality

The KIP 800 Color Series provides a comprehensive solution for a range of wide format printing tasks that require the highest levels of quality and performance. The system's workflow provides powerful print control for any production environment from a range of print submission applications, cloud printing, scan & copy, variable data printing and fully integrated stacking and folding.




Engineered to deliver **BREAKTHROUGH COLOR PRINT QUALITY**


while providing real value from high quality images, reliable performance and efficient operation.

Print production on the KIP 800 Color Series systems produces amazingly vibrant colors, striking graphics, and photographic images that capture subtle tints and hues with unsurpassed color stability from the first to final print.

All prints and copies generated by the KIP 800 Color Series systems are fully lightfast, meaning that they will not fade or exhibit color deterioration from exposure to light over extended periods. The CMYK dry toner system employed by the KIP 800 Color Series produces 100% waterproof images that are suitable for outdoor applications even in inclement weather.

Operational Speeds

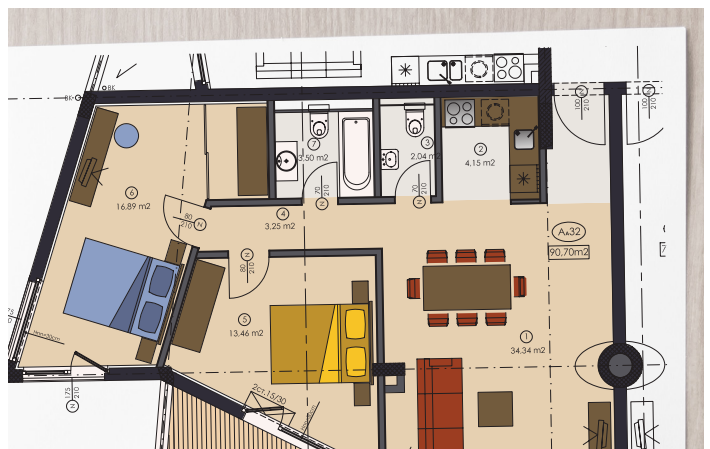
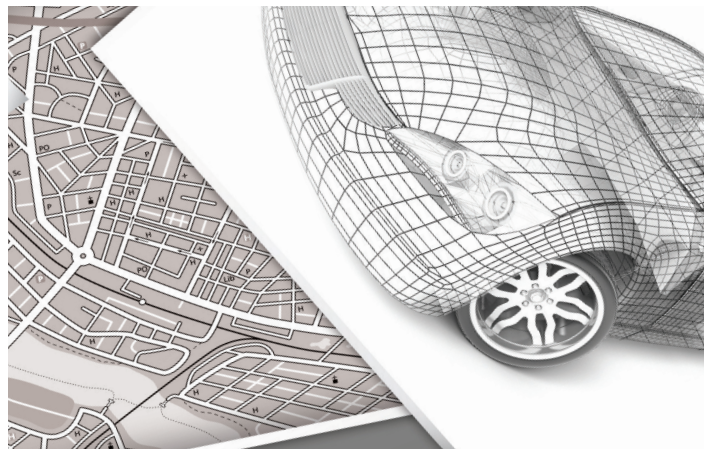
 2,880 square feet per hour (268 square meters)

 2,880 square feet per hour (268 square meters)

TECHNICAL DOCUMENT & DISPLAY GRAPHIC CREATION

The KIP 800 Color Series systems are designed for technical, graphic and office document users who require high demand output, precise imaging and bold, expressive color fidelity.

The KIP 800 Color Series systems are a comprehensive wide format solution for a range of printing tasks spanning from architectural, engineering, and construction documents — to maps, posters, signs, and photo enlargements — without sacrificing quality or performance.



INTRODUCING KIP 800 COLOR SERIES

the new line of color print systems

Explore the new KIP 800 Color Series. Offering the same compact design and function as the KIP 70 Series, now with color. The KIP 800 Color Series saves serious time and money – making ultra high-quality wide format printing more cost effective than ever before. Printing is faster. Operation is simpler. Finishing is automatic. Reliability keeps you up and running. Image quality will keep your customers coming back for more.



KIP 850

Multi-touch color print system

Optimize space and productivity!

The KIP 850 network print system is a space saving workgroup printer delivering fast, low cost color and black & white wide format documents with breakthrough print quality. Easily meet project timelines and exceed quality standards with consistent print speed and precision imaging. Innovative front stacking allows close wall installation to maximize space efficiency.

Features

- 2 Roll Network Printer
- 12" Smart System K Touchscreen
- Standard Front Stacking
- Optional Rear Stacking or KIPFold
- KIP System K Print Management Suite
- Windows and AutoCAD Drivers
- Workflow Automation

KIP 860

Multi-function color system

Experience exceptional workflow efficiency!

The KIP 860 is ideal for environments that require convenient multi-function productivity with a single footprint space-saving design. The KIP 860 color print system provides extraordinary print quality and performance for both color and black & white wide format printing of technical and business graphics. All system features and functions are at your fingertips using the intuitive touchscreen navigation that automates copy, scan and print functions for single touch productivity.

Features

- 2 Roll Multi-Function System with Integrated Scanner
- 12" Smart System K Touchscreen
- Standard Front Stacking
- Optional Rear Stacking or KIPFold
- KIP System K Print Management Suite
- Windows and AutoCAD Drivers
- Workflow Automation



KIP 870

Multi-touch production color print system

A new level of enterprise performance!

The KIP 870 workgroup and departmental print system is designed for high demand project requirements, with outstanding performance and reliability. High resolution color and black & white mixed set production with built-in cost efficiency reporting. Expand the compact front stacking design with versatile rear stacking or folding accessories that increase productivity. Touchscreen convenience offers advanced network cloud access, set printing and system management without a PC workstation.

Features

- 4 Roll Network Printer
- 12" Smart System K Touchscreen
- Standard Front Stacking
- Optional Rear Stacking or KIPFold
- KIP System K Print Management Suite
- Windows and AutoCAD Drivers
- Workflow Automation

KIP 880 890

Multi-function production color system

The ultimate in wide format functionality!

The KIP 880-890 delivers unmatched multi-function copy, scan and print performance for high demand enterprise workflow. Engineered to deliver vibrant consistent color quality from first to final print. The integrated dual footprint configuration multitasks scan and print production, saving valuable project time. Smart touchscreen automation simplifies complex copy, scan and print processes for single touch control.

Features

- 4 Roll Multi-Function System with Integrated Scanner
- KIP 880 includes a KIP 720 CIS Scanner
- KIP 890 includes a KIP 2300 CCD Scanner
- 12" Smart System K Touchscreen
- Standard Front Stacking
- Optional Rear Stacking or KIPFold
- KIP System K Print Management Suite
- Windows and AutoCAD Drivers
- Workflow Automation

KIP 800 COLOR SERIES

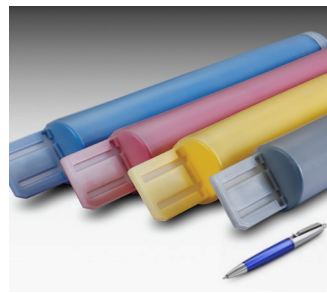
features designed for effortless operation

- Color and Black & White Print Production
- Integrated Folding, Finishing & Stacking Systems
- Automatic Roll Trimming
- Quick Switch Technology
- Integrated USB Port for External Drives
- Production at Remarkable Print & Scan Speeds
- Media Load Assist
- Extended Print Lengths for Maximum Productivity
- Automatic Image Calibration for Precise Color Output
- Technical Document and Display Graphic Creation
- Large Capacity Toner Cartridges for Continuous Print Runs and Productivity



System K Software

The KIP 800 Color Series increases productivity while simplifying the user experience with touch tablet navigation, diverse software suite with ribbon command bars and system standardized icons, along with cloud integration.



Large Capacity Toner

Each CMYK cartridge contains 1,000 gsm of toner for a total capacity of 4,000 gsm - allowing longer uninterrupted color and black & white print runs for continuous system productivity.



Automatic Calibration

An exclusive single belt drive system performs automatic calibrations for precise imaging and bold, expressive color output. This simplifies changing media types.



Extended Print Lengths

The KIP 800 Color Series handles long print images on a variety of media types from either of its 2 or 4 integrated roll decks for maximum productivity and operator efficiency.



Quick Switch Technology

The KIP 800 Color Series print technology eliminates roll switching delays for increased productivity. Two or 4 media rolls and a sheet feeder deliver mixed print sizes at full production speed.



Color and B&W Printing

The KIP 800 Series color and black & white LED production printing systems are based on a unique design that lowers the operational costs and quickly switches between color and black & white production.



Media Load Assist

An ergonomic roll cap system simplifies the process of loading the 3,000 or 6,000 square foot / 278 or 557 square meters media capacity.



Production Printing

The KIP 800 Color Series print systems offer superb resolution at remarkable print speeds of up to 2,880 square feet or 268 square meters per hour, in either color or black & white.

KIP 800 Color Series Accessories

Stacker

The KIP 800 Color Series integrated stacking systems improve the efficiency and productivity of your print production environment by providing a convenient place to neatly stack a multitude of various page sizes. Unattended print runs can be scheduled with peace of mind due to comprehensive internal diagnostics of the KIP 800 Color Series.

Optional for KIP 850, 860, 870, 880-890



KIPFold 1000

The KIPFold 1000 is a compact, but powerful online folder designed to easily, conveniently and quickly fan-fold documents. Folded document packets are crisp, professional and ready for distribution. Unfolded documents are directed to the conveniently located integrated front stacker.

Optional for KIP 850 or 860



KIPFold 2000

The KIPFold 2000 system automates wide format document folding requirements by providing folding, stacking and collation in a compact design. KIP online folders intelligently communicate with KIP printers and are fully integrated with KIP software applications & print drivers to provide seamless workflow integration.

Optional for KIP 850, 860, 870, 880-890



Copying & Scanning

The KIP 800 Color Series provide efficient, high speed hard copy reproduction workflow. Exceptional image quality is achieved through true 600 x 600 dpi optical resolution via a choice of integrated KIP scanners, with advanced optics and delicate original transport processes for pixel-perfect images.

Integrated scanner included with KIP 860

KIP 720 scanner available with KIP 880

KIP 2300 scanner available with KIP 890



KIP 800 COLOR SERIES

*functions available at
your fingertips.*

KIP System K Software Suite provides an enhanced user experience and exceptional productivity for the seamless control of color and black and white print demands.



Experience the most intuitive interface

The KIP 800 Color Series systems feature a diversified software suite that forms the most integrated and powerful wide format color and black & white imaging system available.

From PC & web-based viewing, and printing of documents in a wide range of formats, to professional color management, application drivers, touchscreen & cloud printing, KIP System K Software streamlines production print work, saves time and increases productivity.

KIP System K features & benefits

- Touchscreen tablet navigation
- Standardized system icons with tile interface
- Print submission applications with systems management, configuration and systems status
- Software applications feature ribbon command bar with extended choice of functions
- SNMP protocols, cost center control and cloud collaboration
- System K Windows® Driver, WHQL certified, touch PC compliant with simplified / advanced functions and systems status



KIP System K Multi-Touch Screen

KIP Multi-Touch Touchscreen	Vivid 12" Color Multi-Touch Display Fully Articulating Viewing Angle Print, Copy and Scan in Black & White and Full Color Super View for Swipe, Pinch, Spread and Rotate Print Directly from Removable Media, the Cloud and Local Mailboxes Full Color User Guides Integrated Copy, Scan & Print Previews with comprehensive AOI functions On-screen Set Copy Editor Manage History Queue User Templates System Presets for Company Standards
KIP Color and Black & White Copy & Print Plus	Full Size Preview with Super View Comprehensive AOI functions using modern touch gestures Simultaneous Operation of Color and Black & White Functions Real Time Image Preview Full Screen Color Preview Advanced Color Image Enhancement
KIP Cloud Connect	Select from Multiple Cloud Services Print from KIP Cloud Connect Scan to KIP Cloud Connect Unlimited Cloud Connections Single or Multiple Files Choose Files from Multiple Cloud Services for Single Print Job Easy Configuration from Multi-Touch Screen Collated Sets Printing

KIP System K Print Drivers

Windows® Driver	Fast Spooling for Multiple Copies or Sets Displays Real Time System Status Set Collation Provides Current Media Information Media Selection Secure PIN Printing Send Job on Hold Save / Load Templates Brightness Adjustment Unlimited Image Quality Presets Pens, Dithers, Page Sizes, Fold Patterns, and Scaling System Preset Selection
AutoCAD Driver	Fully Compatible with Current Versions of AutoCAD True HDI AutoCAD Driver 32 and 64 Bit Operating System Compatibility Real Time Media and System Status Custom Media Size Configuration Media Saving by Auto Rotation and Advanced Roll Selection Advanced Color Mode Image Type Selection Pens, Dithering, Page Sizes, Fold Patterns, and Scaling System Preset Selection

KIP Data Security Features

KIP Data Security	Image Overwrite Removable Hard Disk Drive Accessory Kit Operating System: Windows® Standard Embedded 7 Standard Security Updates Data Encryption and Virus Scanning Applications KIP Secure Print SSL Communications
-------------------	--

KIP System K Print Submission

KIP PrintPro	Multiple Copies or Collated Sets WYSIWYP Image Preview Individual File Settings for Job Matrix Templates Multi-Page Settings Color Adjustments and Filter Selections Email Notification Customize Job Build Matrix Windows Document Folding and Stamping HPGL Pen Preset Selection For Windows® 7/8/10 and Vista Compatible (32 and 64 Bit) PC's Customize System and Folder Presets Manage Print Queue KIP Secure Print
KIP PrintPro.net	Multiple Copies or Collated Sets WYSIWYP Image Preview Individual File Settings for Job Matrix Templates Multi-Page Support Color Adjustments and Filter Selections Email Notification Document Folding and Stamping HPGL Pen Preset Selection Transfer Files from KIP Printer Mailbox Compatible with Microsoft Internet Explorer (v. 10 and up), Google Chrome (v. 44 and up), Mozilla® Firefox, Edge, Opera and Apple Safari Customize System and Folder Presets Manage Print Queue and User Settings KIP Secure Print
KIP GraphicPro	Unlimited Workstation Licenses Black & White, Grayscale and Color Printing Job Editor for Mixed Black & White and Color Sets Multi-Page PDF/TIF Filter Editor for Color Control ICC Profile Support for CMYK and RGB Color Management Factory /Custom Media Profiles Nesting Single and Multiple Images Automatic Horizontal and Vertical Paneling Area of Interest (Zoom to Area and Print) Black & White and Color Editing Tools Job Monitor For Windows 7/8/10 and Vista Compatible (32 and 64 bit) PC's
KIP Smart Print & Scan	Submit Print Ready Files via Email Attachments Works with any Web Enabled KIP Printer Print Black & White or Color Documents Scan Full Size Documents to Email Choose an Area of Interest Remote Scan Auto-Archived or Printed by KIP Printer Optional Keywords Provide Expanded Flexibility

KIP System K Accounting / Administrative

KIP Accounting Center	Username and Two Customizable Fields Import User Data Using LDAP Clear Fields after each Job Submission ASCII Import/Export Easily Update User, Project and Department Data Password Protect any or all Data Entries No Special Data Servers Required PC Based Windows 7/8/10 and Vista Application
KIP Cost Center	Integrated with all KIP Apps and Touchscreen Systems Track Color and Black & White Copy, Scan and Print Easy to Understand Graphical Reports Average Toner Coverage by Percent Daily Print and Scan Volume for Color and Black & White User, Project and Department Categories Access the Details of the Last 100 Jobs KIP Toner Costs by Color and Black & White KIP Maintenance Costs KIP Scanner Costs by Color and Black & White PC Based Windows 7/8/10 and Vista Application
KIP Card Reader Systems	Contactless Card System Integration: Standard FeliCa Cards Various Contactless NFC Tokens and Cards NFC Forum – Certified Card Reader User Authentication Linked to Card/NFC Token Release User Jobs at Touchscreen KIP Accounting Center Integration Common Access Card Solution: Enables/Disables Network Access Designed for Easy Installation Meets Homeland Presidential Security Directive (HSPD-12) Local and Network User Authentication Using LDAP or Active Directory Netgard MFD In-Line Network Appliance
KIP Printer Status / SNMP	SNMP Communication to KIP Printer PC Based Windows 7/8/10 and Vista Application Monitor Status of KIP Printers Auto Detect KIP Printer (LAN) IPv4 & IPv6 Visual Notification for Machine Status View all KIP Printers on a Single Screen Automated Meter Read

KIP Print Management Solutions

Touchscreen Technical Interface	The KIP Touchscreen Technical Interface is an integrated comprehensive program for the control of KIP Systems, Installation & Technical Support. Utilize tablet style controls to provide comprehensive and easy access to functions such as automatic adjustments, program updates and printer status, reducing the duration of on-site support and improving productivity.
KIP Custom Media Manager	Accessed by web browser, the KIP Custom Media Manager allows unlimited operator control of media types based on media name, project or job identification.

KIP 800 Color Series Specifications

2/4 Roll Color and Black & White Printer	Color and black & white printer with intelligent KIP System K touchscreen
2/4 Roll Color and Black & White Print/Copy/STF	Color and black & white printer with intelligent KIP System K touchscreen for Print/Copy and STF functions
System Scanners	KIP 860: KIP 720 embedded / KIP 880: KIP 720 CIS Scanner / KIP 890: KIP 2300 CCD Scanner
Scanner Stand	KIP 720 / KIP 2300 Scanner Stand (for the KIP 880-890 or optional for stand-alone scan applications)
Stacking Systems (standard)	Front Stacking Print Tray
Finishing Systems (optional)	KIP 800 Stacker, KIPFold 2000 (all models) or KIPFold 1000 (exclusive for KIP 850 / KIP 860)
Description	High production color and black & white wide format print/copy/scan
Type	LED Array Electro photography with organic photoconductor (OPC drum) Contact Development using non magnetic mono-component toner
Configurations	Printer or multi-function system (print/copy/scan)
Speed	Up to 2880 sq. ft. / 268 sq. m per hour in either black & white or color regardless of image type or print resolution
Warm Up Time	Instant from standby, less than 6 minutes from power on
Toner	Four color (CMYK), dry toner, print images are UV resistant and waterproof
Input Power	North America: 220-240 V, 50/60 Hz, 20 A EU/UK: 220-240 V, 50/60 Hz, 16 A
Power Consumption	Ready: 0.6 kWh. Printing: 1.9 kWh, Warm Up: 3.4 kWh, Sleep Mode: 3 Wh
Acoustic Noise	< 65 db Printing
Ozone	< 0.05 ppm (average of 8 hours)
Dimensions	KIP 850 60" x 43" x 40" / 1500 x 1080 x 1015 mm (W x D x H) KIP 860 60" x 43" x 46" / 1500 x 1080 x 1155 mm (W x D x H) KIP 870 60" x 43" x 48" / 1500 x 1080 x 1220 mm (W x D x H) KIP 880-890 78" x 43" x 48" / 1970 x 1080 x 1220 mm (W x D x H)
Weight	KIP 850 1,070 lbs / 485 kg KIP 860 1,125 lbs / 510 kg KIP 870 1,170 lbs / 530 kg KIP 880 1,225 lbs / 556 kg Weight of the KIP 880-890 is dependent on the scanner model – KIP 720 noted

Printer

Print Resolution	600 x 2,400 dpi
Paper Capacity	3,000 sq ft / 280 sq m (2 rolls + cut sheet) 6,000 sq ft / 560 sq m (4 rolls + cut sheet)
Output Sizes Width (roll media)	11" - 36" / 297 mm - 914 mm
Output Sizes Length (roll media)	8.5" / 210 mm minimum, 210' / 64 m maximum (actual length may be dependent on media type and file type limitations)
Paper Weight (roll media)	Bond: 18 – 40 lb / 67 – 150 gsm, Film: 3 – 4 mil Double Matte Polyester, Tracing: 18 – 20 lb / 67 – 75 gsm Banner and Gloss: see KIP 800 Media Guide
Sheet Bypass	Up to 40 lbs. / 150 gsm bond Maximum sheet size 36" / 914 mm x manageable length Minimum sheet size 11" x 17" / A3
Media Types	Bond Paper: Economical Bond, Standard Bond. Specialty Bond paper: Presentation Bond, Heavy Weight Bond. Polyester Film: 3 mil Clear, 3 mil Double Matte, 4 mil White Opaque. Banner Media: Fusion Soft Polyester. Please see the KIP 800 Series Media Guide for details.

Scanner / Copier

Resolution	600 dpi (optical)
Original	Single Sheet, image viewable / face up
Widths	8.5" - 36" / 210 mm - 914 mm (international standard page sizes to include ANSI, ARCH, ISO A & B, CHN, JPN)
Length	8.5" - 19.7' / 210 mm - 6 m

Please see the KIP 2300 Scanner documentation for details on this optional scanner for the KIP 890 Color System

Controller

Controller Type	System K Embedded, Windows Standard Embedded 7 – 64 bit, i5 Quad Cord (min)
Memory	4 GB (min)
Compatible File Formats	Raster Color: TIFF, JPG, JPG2000, PNG, BMP, GIF, TGA, RLE/RLC Vector Color/B&W: HPGL, HPGL/2, HP-RTL, Postscript (PS/EPS), Adobe PDF, Autodesk DWF, Multipage PDF & DWF Raster B&W: TIFF Group 3 & 4, CALS Group 4, Grayscale TIFF Vector B&W: Calcomp 906/907

Space, Electrical & Environmental Requirements

Total Space (minimum)	132" x 103" / 3350 x 2600 mm (W x D) (KIP 850, 860 & 870) 178" x 103" / 4500 x 2600 mm (W x D) (KIP 880 with KIP 720) 132" x 205" / 3350 x 5190 mm (W x D) (KIP 850, 860 & 870 with optional rear print stacker) 178" x 205" / 4500 x 5190 mm (W x D) (KIP 880 with KIP 720 with optional rear print stacker) The flexibility of the KIP 880-890 system permits the scanner to be placed perpendicular or parallel to the KIP printer for individual workflows, which can result in special requirements that may differ than noted above. System access through standard door frames without lifting or tilting.
Electrical Requirements	KIP 850, 860 & 870 North America: 220-240 V, 50/60 Hz, 20 A EU/UK: 220-240 V, 50/60 Hz, 16 A KIP 880-890 North America: 220-240 V, 50/60 Hz, 20 A for KIP Printer and 110–120 V, 50/60 Hz, 20 A for KIP Scanner EU/UK: Two - 20-240 V, 50/60 Hz, 16 A (one for KIP Printer and one for KIP Scanner)
Electrical Receptacle	North America = NEMA 6-20 R (plus one NEMA 5-20 R for the KIP 880-890) Europe = CEE 7 (x2 for KIP 880-890) UK = BS 546 (x2 for KIP 880-890) All other regions = please refer to your local standards
Network Port	RJ-45 port-CAT5 or higher. LAN rated at least at 100mb. Recommended is 1000 mb
Room Temperature	50-86°F / 10-30°C
Humidity	15-80% RH
Site Survey	KIP 800 Color Series site survey documentation is to be completed prior to system installation

THE COLOR OF KIP IS GREEN.

KIP is committed to product designs that promote environmental health and sustainability. KIP's goal is to consistently improve and refine the technologies in products that keep our planet green. KIP considers the total product life cycle - from the manufacturing process to final device disposal in our shared ecosystems.



LOW EMISSIONS – HIGH EFFICIENCY

- KIP products all have a variety of sleep modes and power usage timers to reduce power consumption. All KIP systems are Energy Star qualified.
- During operation, the power consumption of KIP products are one of the lowest in the industry thanks to efficiency in design.
- KIP's manufacturing processes have reduced electricity consumption by 33%, all while increasing productivity.



KIP.COM/GREEN | FOR MORE INFORMATION





TOSHIBA
Leading Innovation >>>

www.KIP.com

KIP is a registered trademark of the KIP Group. All other product names mentioned herein are trademarks of their respective companies. All product features and specifications are subject to change without notice. Complete product specifications are available upon request. © 2015

V09/29/15-TBS